

**Growing Auckland
Growing New Zealand**



Committee for
Auckland
www.aucklandnz.org

New Zealand's economic powerhouse – the Auckland Agenda

Kaaren Goodall
Director
Committee for Auckland

Master of Public Policy 2010 Seminar Series
29 July 2010



Why do cities matter?

- cities compete - nations don't
- cities drive the performance of their nations
- cities are highly productive
- and what's more ...they are fabulous

"The fact is that urbanisation, like immigration, is a powerful trend driven by positive attraction, and no amount of intervention will hold it back. People move to cities because they are more likely to find good jobs, strong social connections, cultural amenities, joy, and love. By their size alone, cities are apt to be able to provide all these things in a variety of ways. It is in the big cities that one can find a great variety of cultural activity, from opera to professional baseball, from live theatre to a big automotive show, from jazz clubs to literary festivals, from chamber music to rock concerts. You can find many of these things in smaller centres, but not on the scale and with the same variety as in the big cities, and people find that attractive."

'Urban Nation –Why We Need To Give Power Back to the Cities to Make Canada Strong' Alan Broadbent: Harper Collins 2008

**Growing Auckland
Growing New Zealand**



Committee for
Auckland
www.aucklandnz.org

What is the Committee for Auckland ?

The Committee for Auckland is an independent group of senior Auckland leaders, chaired by Sir Ron Carter

- 70 Members drawn from across Auckland from the tertiary, non profit, civic and business sectors
- Share a vision of ‘Auckland becoming one of the world’s great places to live and work’.
- We work to identify issues, generate good ideas, and move these ideas into action – **for** Auckland.



The Committee for Auckland's 2010 Work Programme

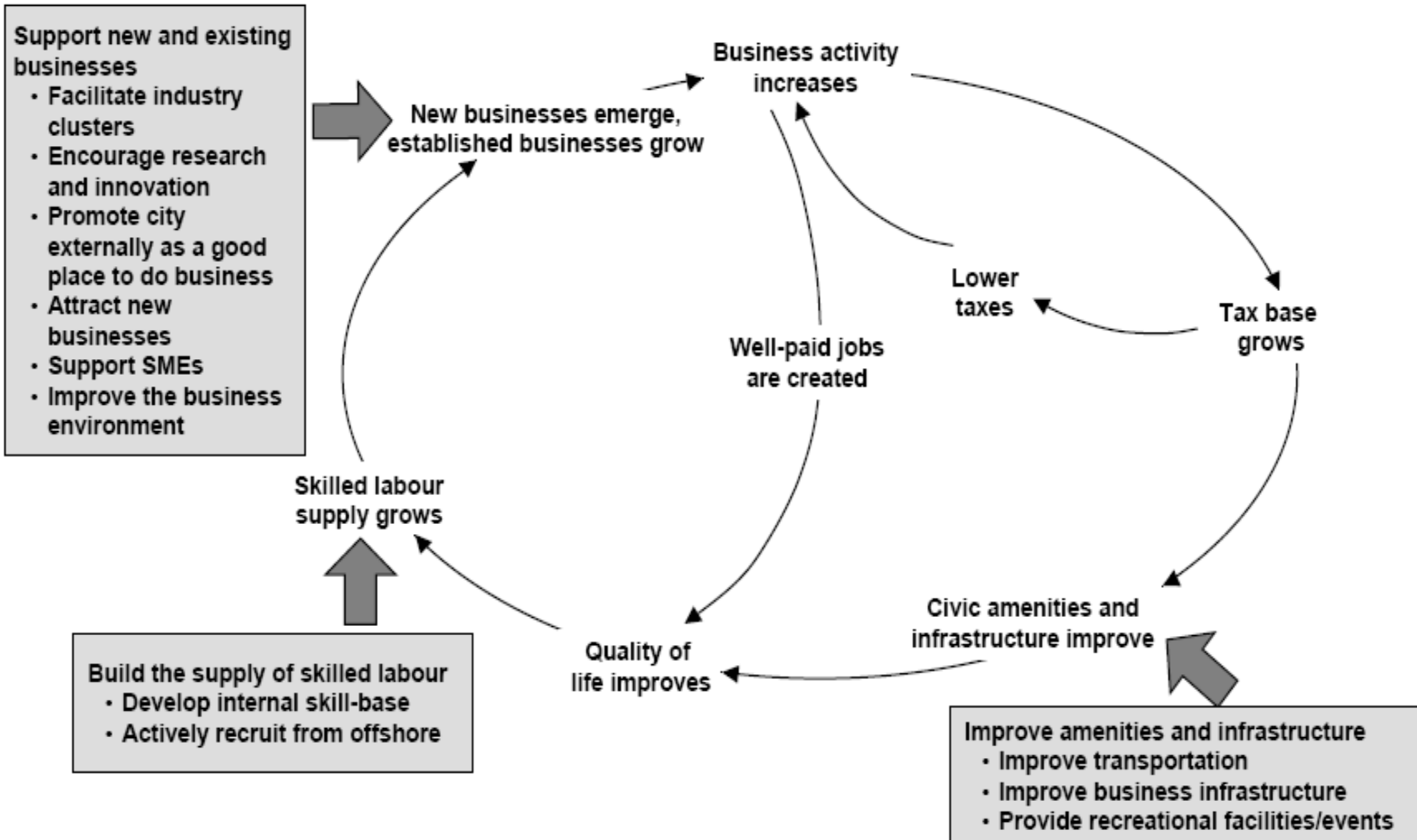
- Igniting leadership and momentum
 - Future Auckland Leaders programme
- Dynamic and collaborative business region
 - The new Mayor and Auckland Council
 - City Transformers
 - Auckland Anchors
 - Iwi Economic Consortium
- Accelerating liveability
 - Whole of waterfront approach
 - Making the case for the city centre
- Generating talent and knowledge
 - Iwi consortium
 - Schools & Business – achieving for Auckland

Growing Auckland Growing New Zealand



Committee for
Auckland

www.aucklandnz.org



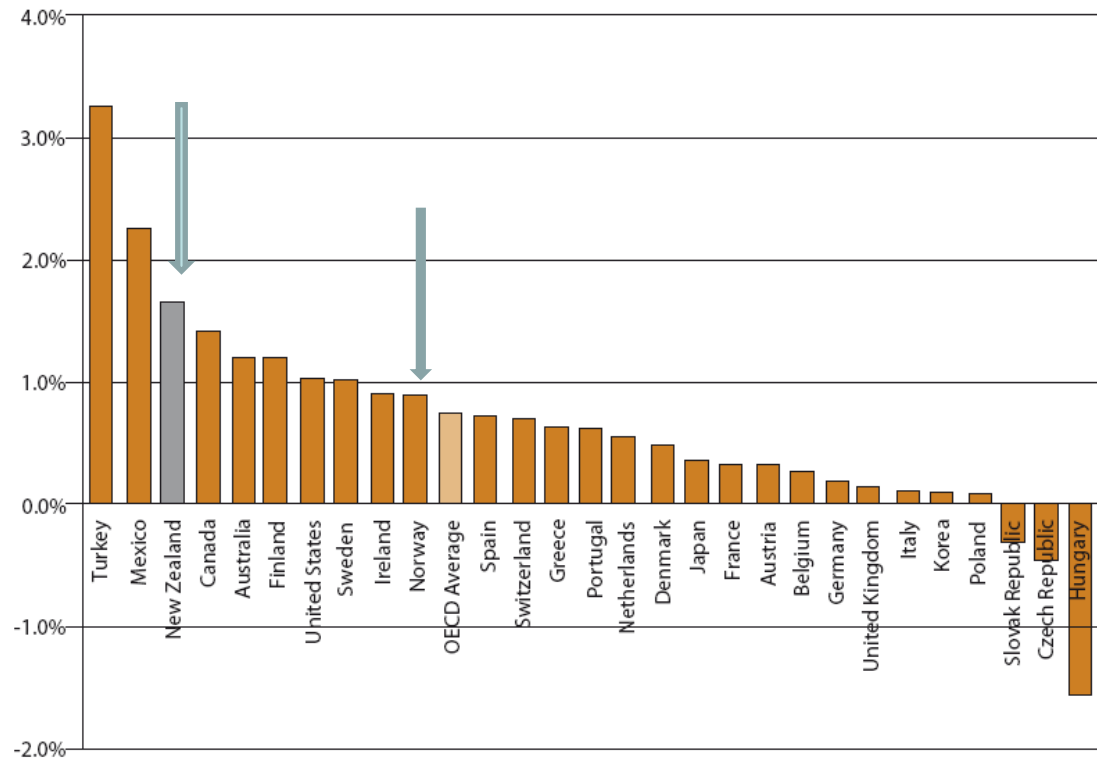
Growing Auckland Growing New Zealand



New Zealand is an urban nation

- in 1881 40% urban
- by 2002 85.7% urban
- 3rd fastest-growing OECD nation

Urbanisation Growth in OECD Countries
Average annual growth in population in predominantly urban areas (1980-2004)



Source: Competitive Cities in the Global Economy, OECD 2006



Auckland is a NZ 'powerhouse'

- NZ is one of the few countries where the majority of the country's GDP comes from the biggest city

- More than 50% of NZers already live in the "Golden Triangle" (Bay of Plenty-Waikato-Northland)

A small group of cities earning high proportions of their country's wealth

New Zealand	Auckland	34%
UK	London	31.6%
Sweden	Stockholm	31.5%
Japan	Tokyo	30.4%
France	Paris	27.9%

Source: Competitive Cities in the Global Economy, OECD 2006

- Auckland's tax export in 2007 was \$21.2 billion; GST \$3.9 billion

- NZG invested \$17.1 billion in Auckland; NZG is our senior partner

Growing Auckland Growing New Zealand



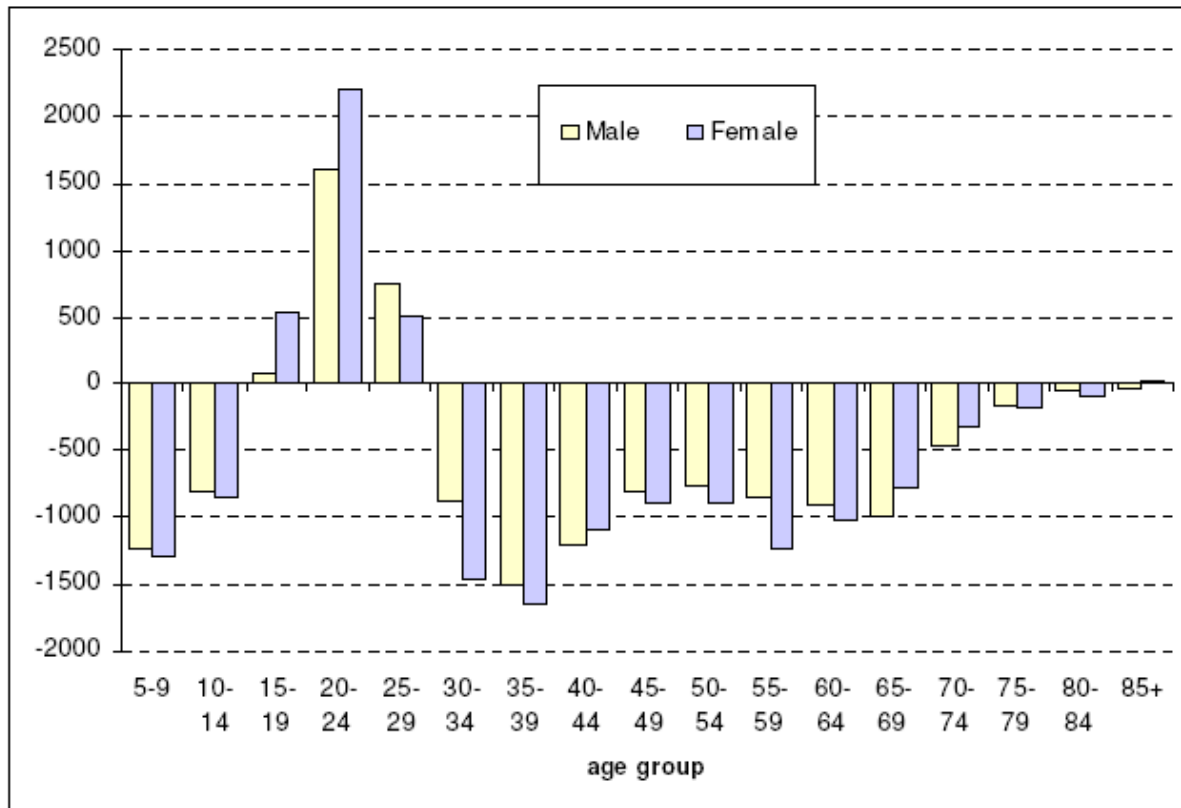
New Zealand and Auckland are highly connected





Auckland contributes to New Zealand's development

Figure 3: Net internal migration movements between Auckland and rest of New Zealand by sex and age group (2001 to 2006)



Source: Statistics N.Z. 2006 Census .customised data (based on question "where were you five years ago?")

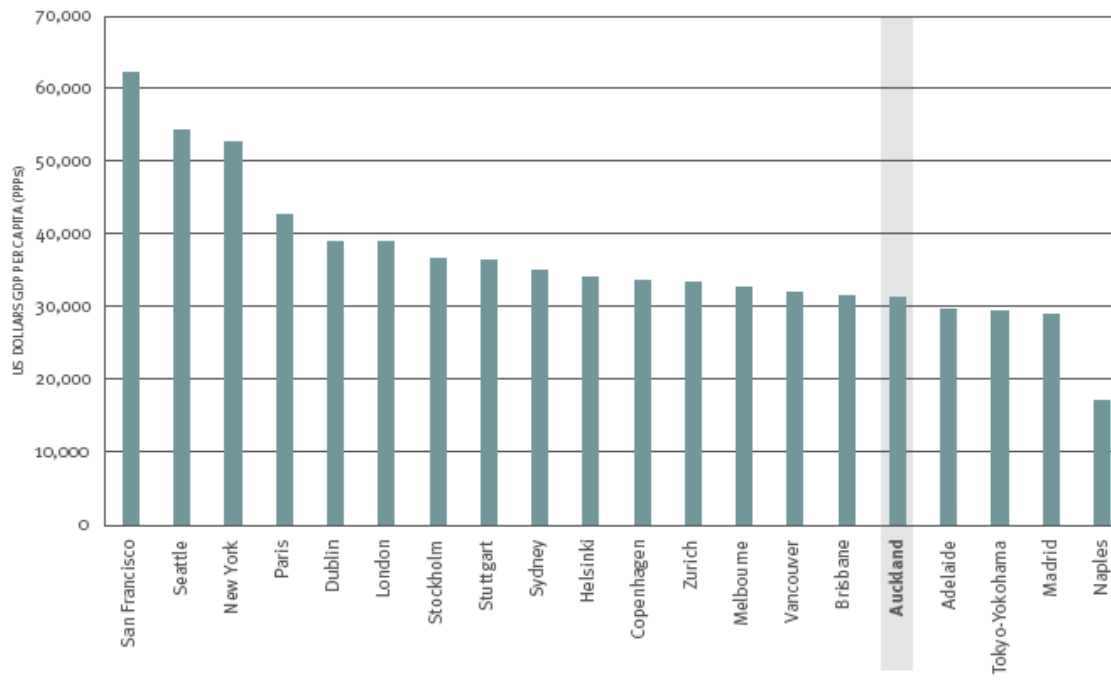
Growing Auckland Growing New Zealand



However Auckland's contribution is not what it should be....

FIG.
6.1

Ranking of metropolitan regions by income (USD GDP per capita in PPPs), 2002





Auckland's challenges

- Infrastructure is incomplete and under-developed
- Lack of shared purpose or clear commitment – across all sectors – to achieving improved performance
- Concentrations of social deprivation reduce Auckland's economic contribution
- Auckland has significant housing affordability issues
- Auckland is not drawing fully on the skills of talented migrants
- Auckland faces a demographic faultline....

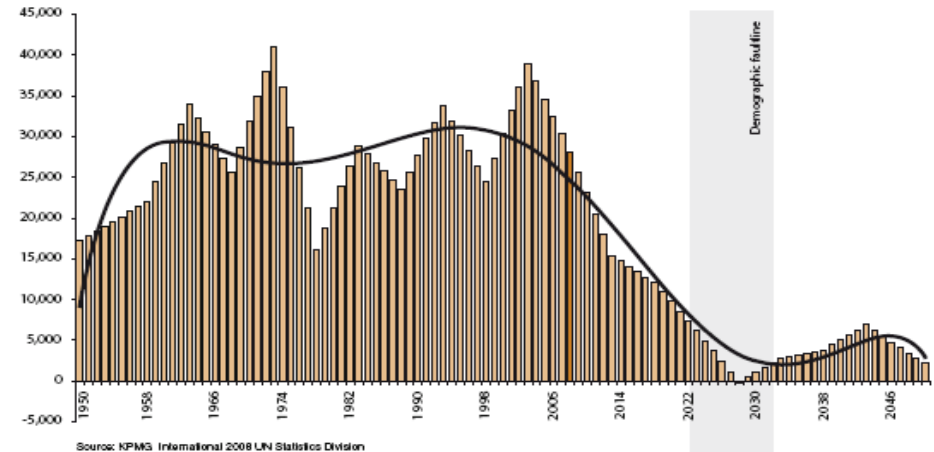
Growing Auckland Growing New Zealand



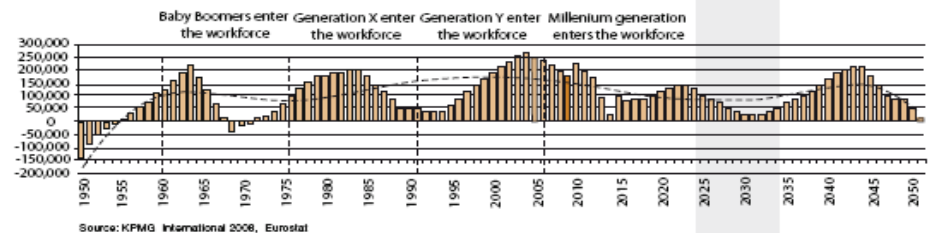
What are Auckland's constraints?

- Demographic faultline: no more talent at 2025
- The competition is other cities
- The competition occurs in the same years

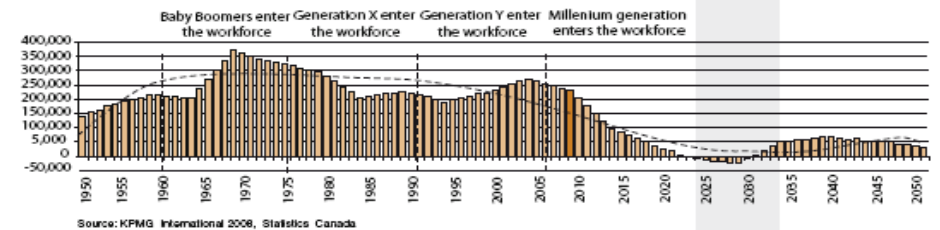
Net Annual Change in the Population of NZ aged 15-64, 1950-2050



Net Annual Change in the Population of UK aged 15-64, 1950-2050



Net Annual Change in the Population of Canada aged 15-64, 1950-2050



Graph with special thanks to Bernard Salt and Joel Bovin KPMG Australia for producing the NZ data.



What are Auckland's constraints?



- New Zealand is falling behind other nations in redressing its infrastructure deficit.
- New Zealand rated 21st in the OECD nations for planning and funding infrastructure.
- OECD 2008 Fact Book indicates New Zealand amongst the lowest public debt to GDP ratios.



Auckland can play more to its strengths

Auckland can contribute more by building on its competitive advantages:

1. Agglomeration
2. High tech industries
3. Specialised economies
4. Talent and visitor magnet
5. Infrastructure connections



Auckland's competitive DNA

- Second or third in the world for (high tech) superyacht production
- Half of NZ's creative sector employees (including screen production; digital content)
- Auckland's education sector earns over half NZ's education earnings
- Auckland acts as a “talent magnet” for attracting international skills to NZ: around 80% of migrants enter NZ through Auckland
- Auckland can leverage the benefit of NZ's economic anchors....

The Auckland Anchors

- Auckland Airport
- Ports of Auckland
- University of Auckland
- AUT University
- Unitec
- Massey University
- Manukau Institute of Technology
- Auckland DHB
- Royal NZ Navy
- Auckland War Memorial Museum
- Waitemata DHB
- Counties Manukau DHB
- Ngati Whatua o Orakei

Direct contribution to Auckland economy:

- Expenditure on staff \$2.2 billion
- FTE staff 26,565
- Footprint in Auckland approx 2300 hectares
- Asset base approx \$6.2 billion
- Annual turnover approx \$5.1 billion
- Capital investment \$610 million p.a



A possible agenda allowing Auckland to perform at its best

1. Aucklanders backing the new leadership platform – a positive commitment to making it work
2. Developing a shared vision and “unity of purpose” across Auckland
3. Tackling 4 or 5 Auckland priorities and doing them very well
4. Prioritising infrastructure with wider economic benefits
5. Sustaining a new relationship with Govt to partner in NZ’s prosperity
6. Investing in people, the best ideas, and the smartest businesses to provide opportunities for all.